

- **THE APPLICATION OF HOMEOPATHY IN 3136 PIGS**



**DR CARLA DE BENEDICTIS VETERINARY  
SURGEON, HOMEOPATH LFHom Velletri  
(Rome, Italy)**

[carladebene@gmail.com](mailto:carladebene@gmail.com)

[www.lospiritedeglianimali.com](http://www.lospiritedeglianimali.com)

# Homeopathy as a contribution for an eco-sustainable development in veterinary medicine.

## Experiences in three different situations in pig breeding farms



*Manifestazioni nervose in suineto affetto da meningococcefalie da streptococchi*



# RESULT OF A SERVICE OF HOMEOPATHIC TREATMENT

- IN AN INTENSIVE PIG MEAT BREEDING FARM
- IN SOWS BREEDING FARM
- Home breeding farms



# PIGS MEAT BREEDING FARM

- N 2800 with control group
- Pathology Respiratory syndrome
- Aethiology Mycoplasmosis
- Symptoms Dry, persistent cough aggravated by movement
- Total immobility, lying position
- Lesions of the limbs, lying on the affected limbs
- Improve when places in a separate dry box
- Therapy Homeopathy and antibiotics half dosage

	Sperimentation group	Control group	Advantages %
Powder Antibiotic	3 Kg	150 Kg	- 98
Injectable Antibiotic	21	72	- 70,83
Mortality	2	15	- 86,6
Lesions in limbs	11	20	- 45

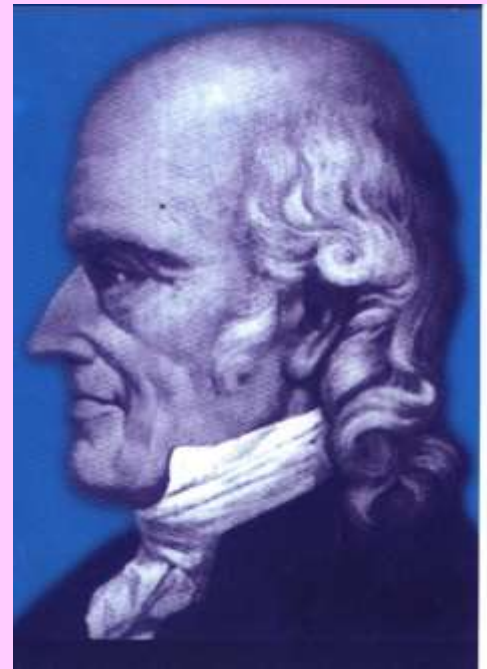
# SOWS

- *RESULTS OF A SERVICE OF HOMEOPATHIC TREATMENT CARRIED OUT IN A HERD OF SOWS WITH THE PURPOSE OF LIMITING A VERY HIGH MORTALITY AT BIRTH 90%*



# *EUGENICS METHOD ON A GROUP OF AFFECTED SOWS WAS SPERIMENTED*

- *HAHNNEMANN par 284 Organon sixth edition*



# METHOD

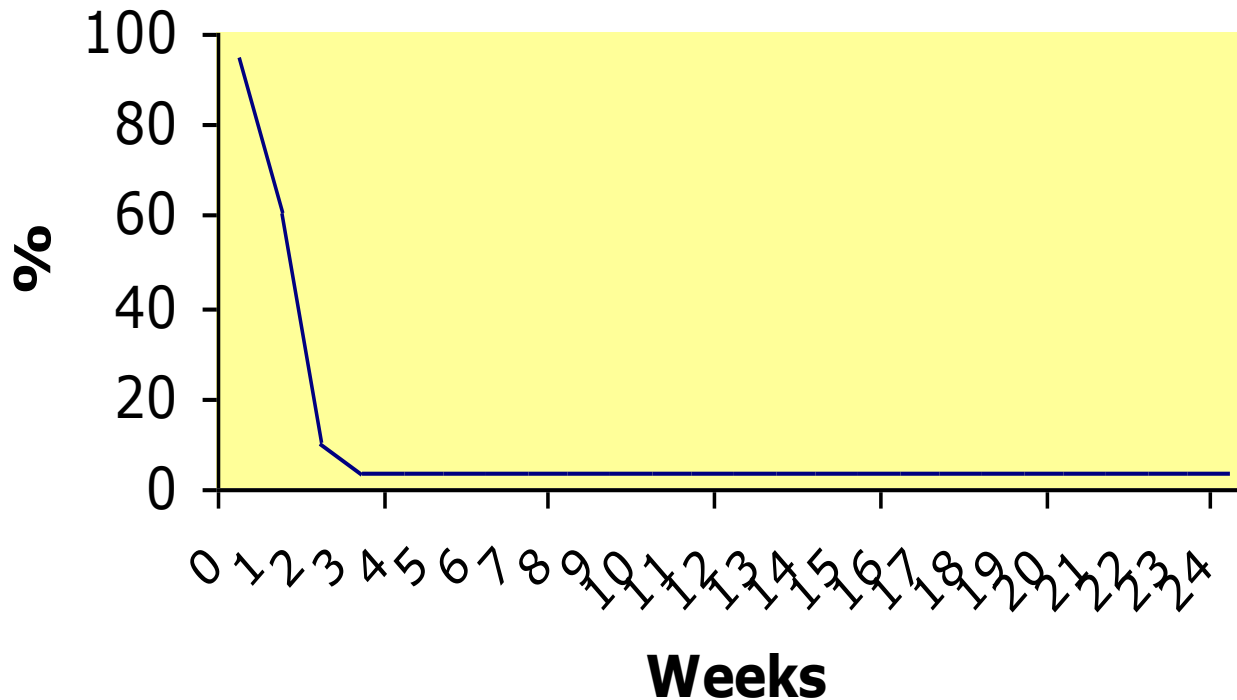


- Homeopathy, Homotoxicology, nosodes, conventional therapies
- N° 100 sows 10 boars
- PATHOLOGIES piglets neonatal mortality and diarrhea , sows infertility, mastitis,agalaxia, endotoxiemic shock, anorexia, boars sexual desire diminished and respiratory disorders



# Neonatal mortality rate

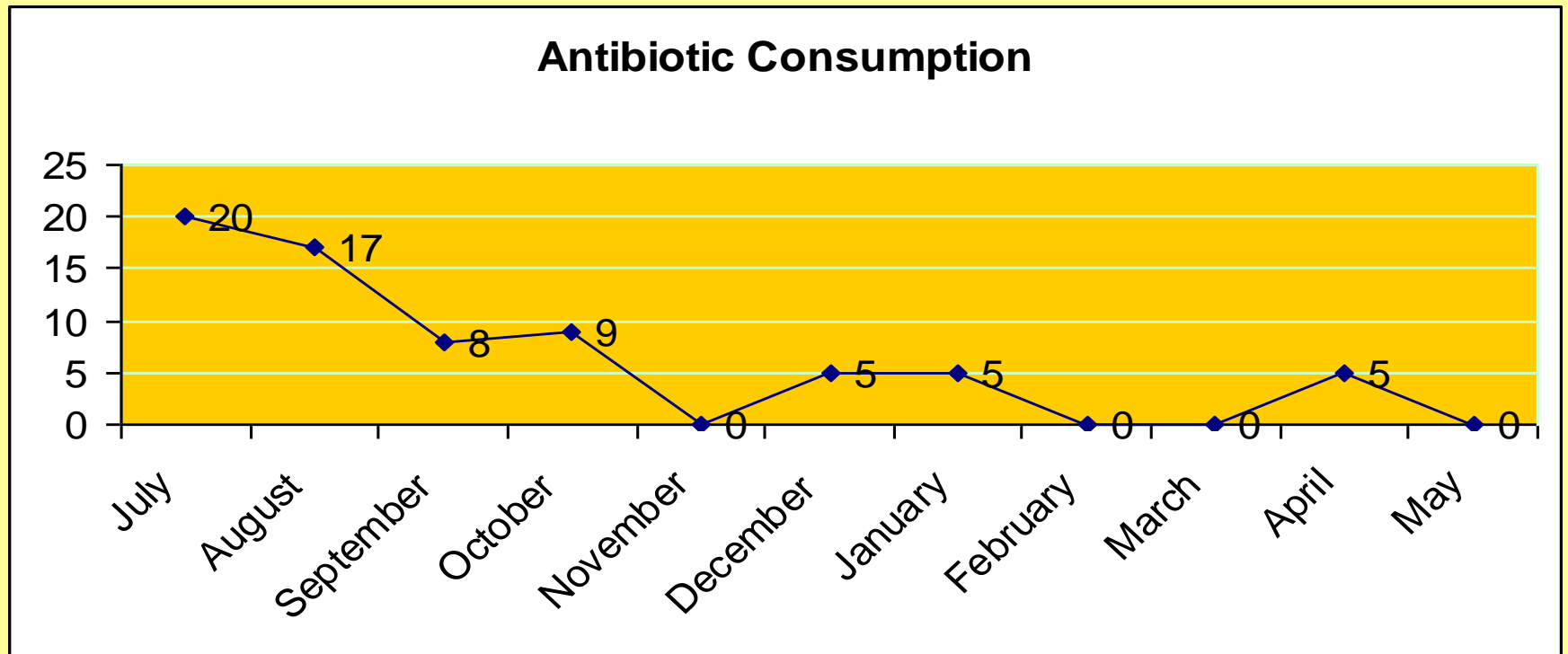
**Neonatal mortality in piglets after homeopathic treatment**



# Eugenic treatment in pregnancy

- First month  
1000K once  
THUJA
- Second month  
XMK once  
SULPHUR
- Third month  
CARBONICA 1000K once  
CALCAREA
- 10 days before delivery  
200K once  
SEPIA

# ANTIBIOTIC CONSUPTION DURING HOMEOPATHIC TREATMENT AND EUGENIC METHOD



# Home breeding farms

- Diseases most commonly founded  
**Only Homeopathic treatment**
- Erisipela
- Eschierichia coli
- Mycoplasmal pneumonia
- Ear infections
- Myodistrophia
- Respiratory disorders
- Sarcoptic mange
- Alimentary disorders
- Feet pathology
- Diarrhea
- Constipation
- Dystocia
- Labor pains
- Stress



# ANIMAL WELFARE

Intensive pig breeding farm don't respect the animal welfare in according with the five freedoms

1. ↑ Freedom from thirst, hunger and malnutrition
2. ↑ Freedom from discomfort - appropriate environment, shelter, resting places provided
3. ↑ Freedom from pain - prevention and prompt treatment of injuries and disease
4. ↑ Freedom to express normal behaviour
5. ↑ Freedom from fear and distress

(British Farm Animal Welfare Council, 1979)



# Ethological and behavioural aspects

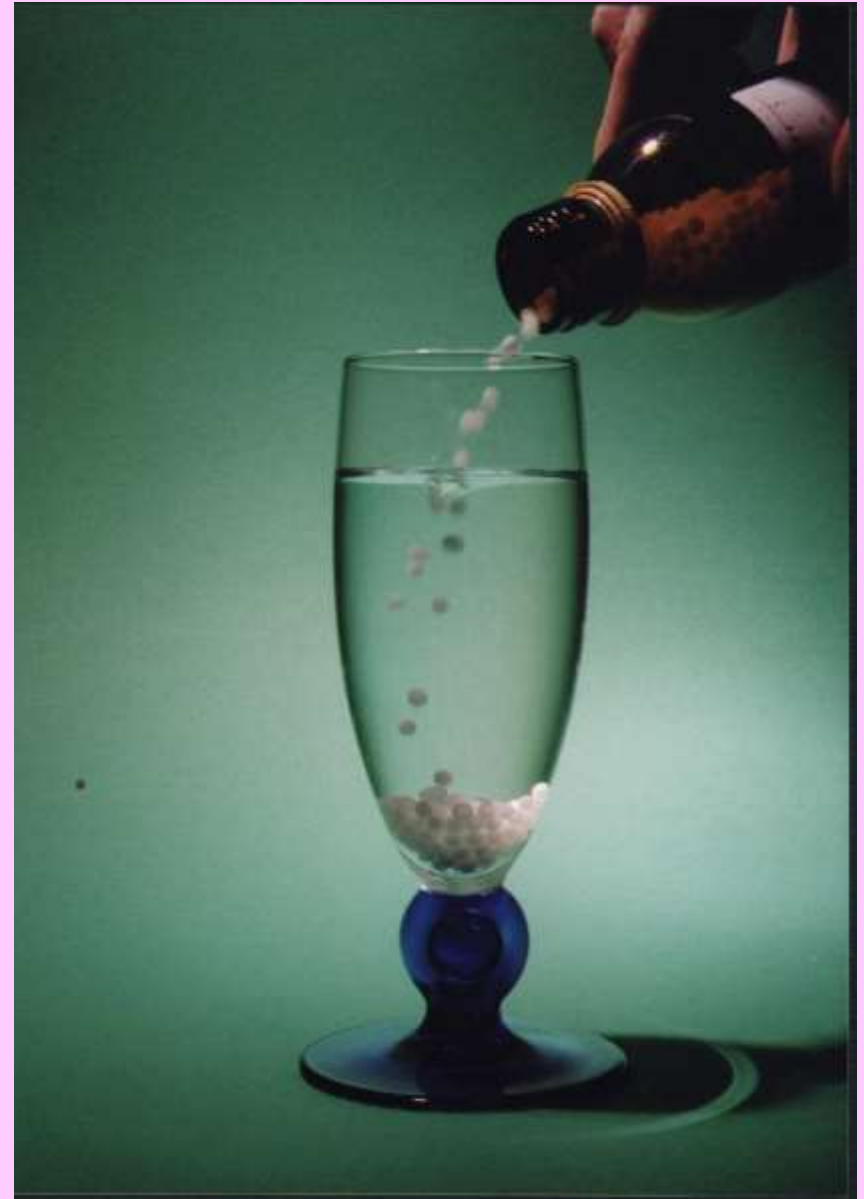
- The swine is a social animal with a rigid hierarchy and need to have space enough for escape from the dominant.
- Swine is very intelligent, Q.I. 5 years old child and the confinement is particularly stressfull
- The swine is very curious and boredom in intensive pig breeding farm lead to aggressive behaviour and mutilation, grief



- The stress induce to diseases.

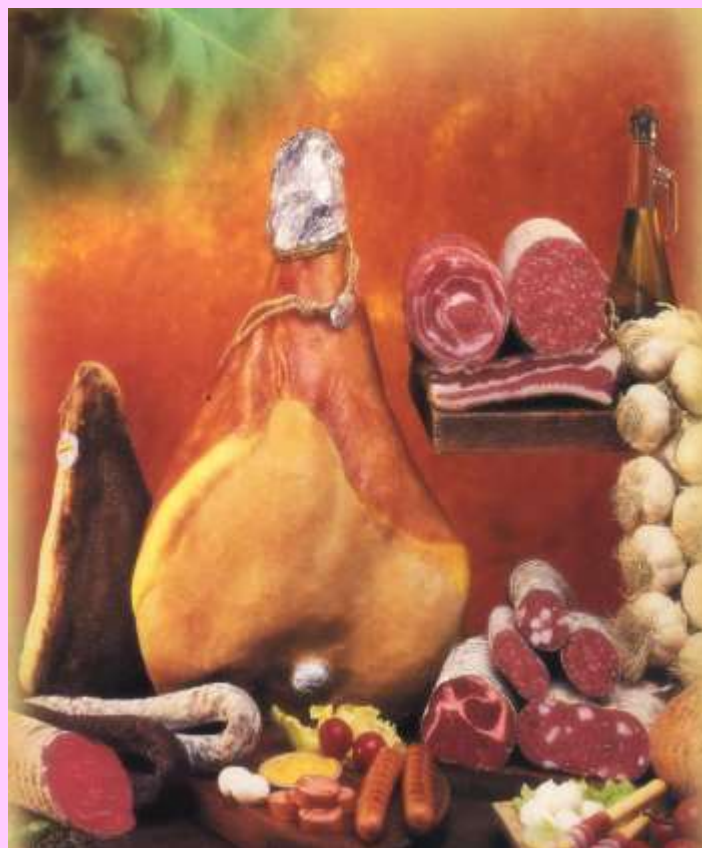
# ADVANTAGES OF HOMEOPATHY

- IS EASY TO ADMINISTER (IN WATER)
- NO STRESS FOR INDIVIDUAL THERAPIES
- NO SIDE EFFECTS, LOCAL AND GENERAL
- NO WORK FOR OPERATORS
- NO ENVIRONMENTAL POLLUTION
- NO RESIDUAL ANTIBIOTICS IN MEAT
- NO WASTAGE OF MONEY IN MEDICINES
- MORE RESISTANCE TO DISEASES
- LOW PRICE OF REMEDIES
- HOLISTIC VISION OF FARM MANAGEMENT



# ADVANTAGES OF HOMEOPATHY

- The care of animals with homeopathy is important for an eco-sustainable development in veterinary medicine
- According to new directives from the EU samples testing the permanence of residual antibiotic molecules and parasiticidal agents in the meat
- The health risk to humans due to contaminated food must be checked in the stable in according with



H.A.C.C.P. (Hazard Analysis Critical Control Point)



# ADVANTAGES OF HOMEOPATHY

According to the new directives of C.E., Document 391R2092, Document 399R1804, Reg CE 2092/91, Reg CE 1804/99 non conventional medicines are the first choice in the treatment of animals that produce biological meat and milk.



# FROM STABLE TO TABLE

- PASSING THROUGH ANIMAL WELFARE
- RESPECTING ENVIRONMENT
- MORE SAFETY AND QUALITY OF PRODUCTS
- PROTECTION OF CONSUMERS



THANK YOU FOR YOUR  
ATTENTION

